

General Signs



Stay



Safe



Home



family



school



closed



Friend



apart



near



Open



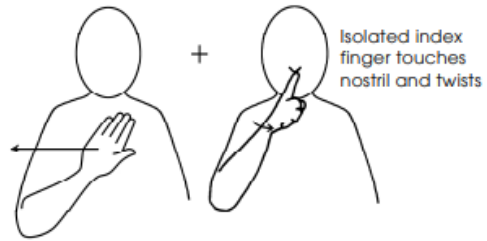
Germs

Dirty

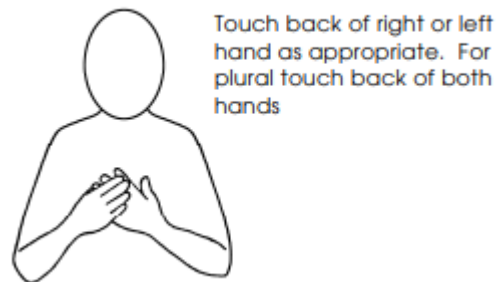


Dominant fist makes two small twisting movements towards self

Don't Pick Nose

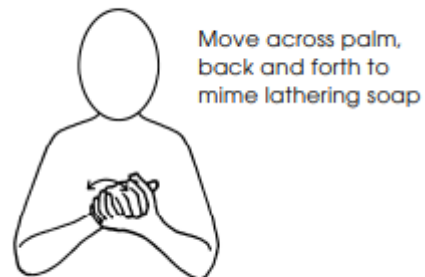


Hand

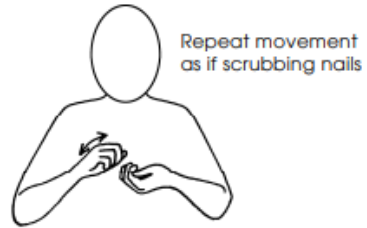


Clean

Soap



To Clean/ Scrub Nails
(with nailbrush)



Water (1)

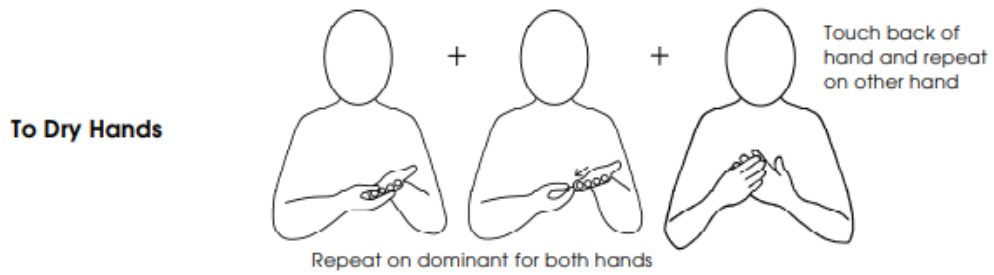


To Wash Hands



Washbasin/ Sink





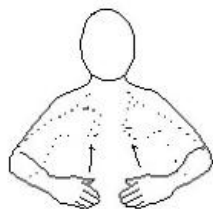
Good



Little finger

Bad

NB: some people already use thumbs down for bad, if this is more meaningful for them then use this instead.



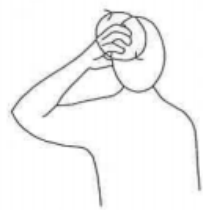
How are you?



Middle finger moves up
centre of chest

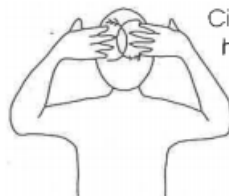
I feel

Emotions



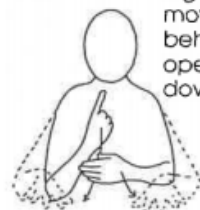
Tense hand
Use both
hands if very
worried

Worried



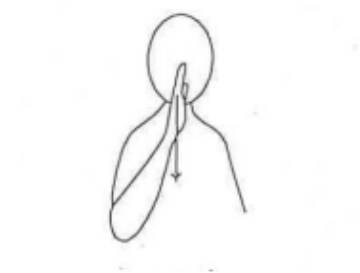
Circling clawed
hands overlap
in alternating
movement

Confused



Right index finger
moves sharply down
behind left hand, both
open to flat hands, palms
down, and move forward

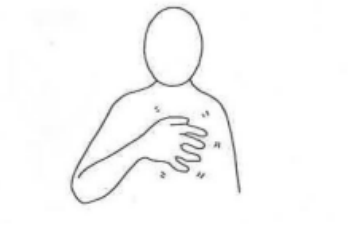
Lonely



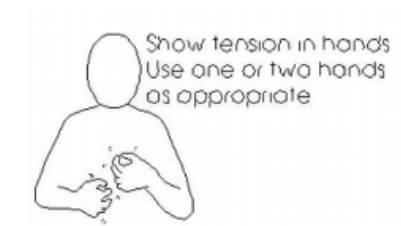
Sad



Happy



Scared / Frightened



Angry



Hands tremble

Nervous

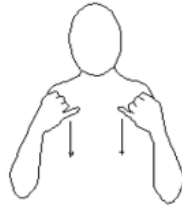


Bored



Calm

Physical

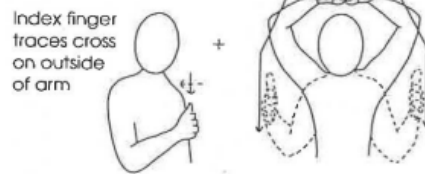


ill



With index
finger and
thumb, mime
taking pulse

Doctor



Index finger
traces cross
on outside
of arm

Hospital



place near area of
infection
middle finger flicks
off thumb twice

Infection

To Cough



Fever



Temperature



Hot



Cold

To Sneeze

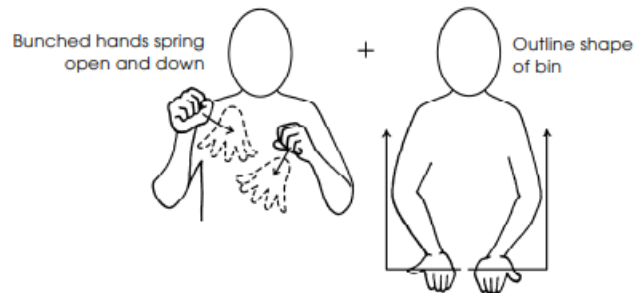


Tissue



Mime pulling out tissues from box

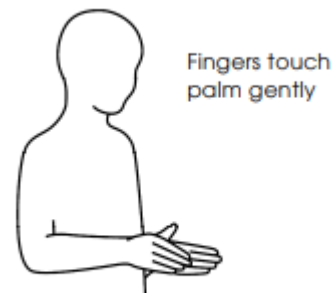
Bin





face

To Touch



**Breathing
Problems**

Palm, flat on chest,
moves gently away
from and back



+

Twist thumb
into palm

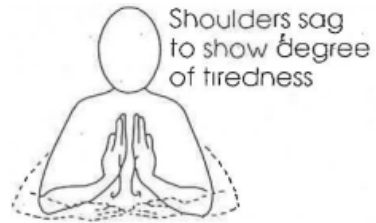


Position hand at part of body
that hurts and shake hand

Pain



Sore Throat



Tired



Index finger moves slightly
to right and circles to show
dizziness

Dizzy



headache